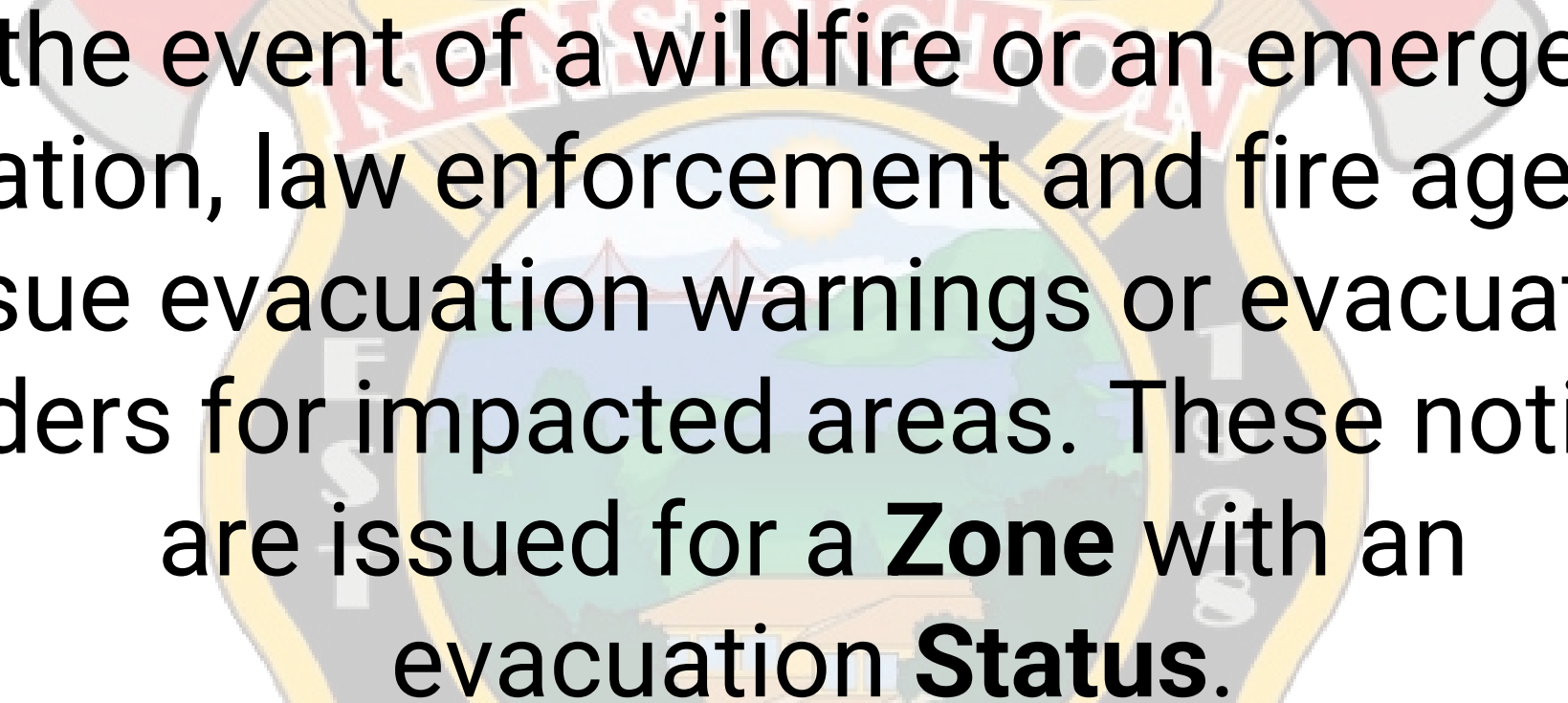
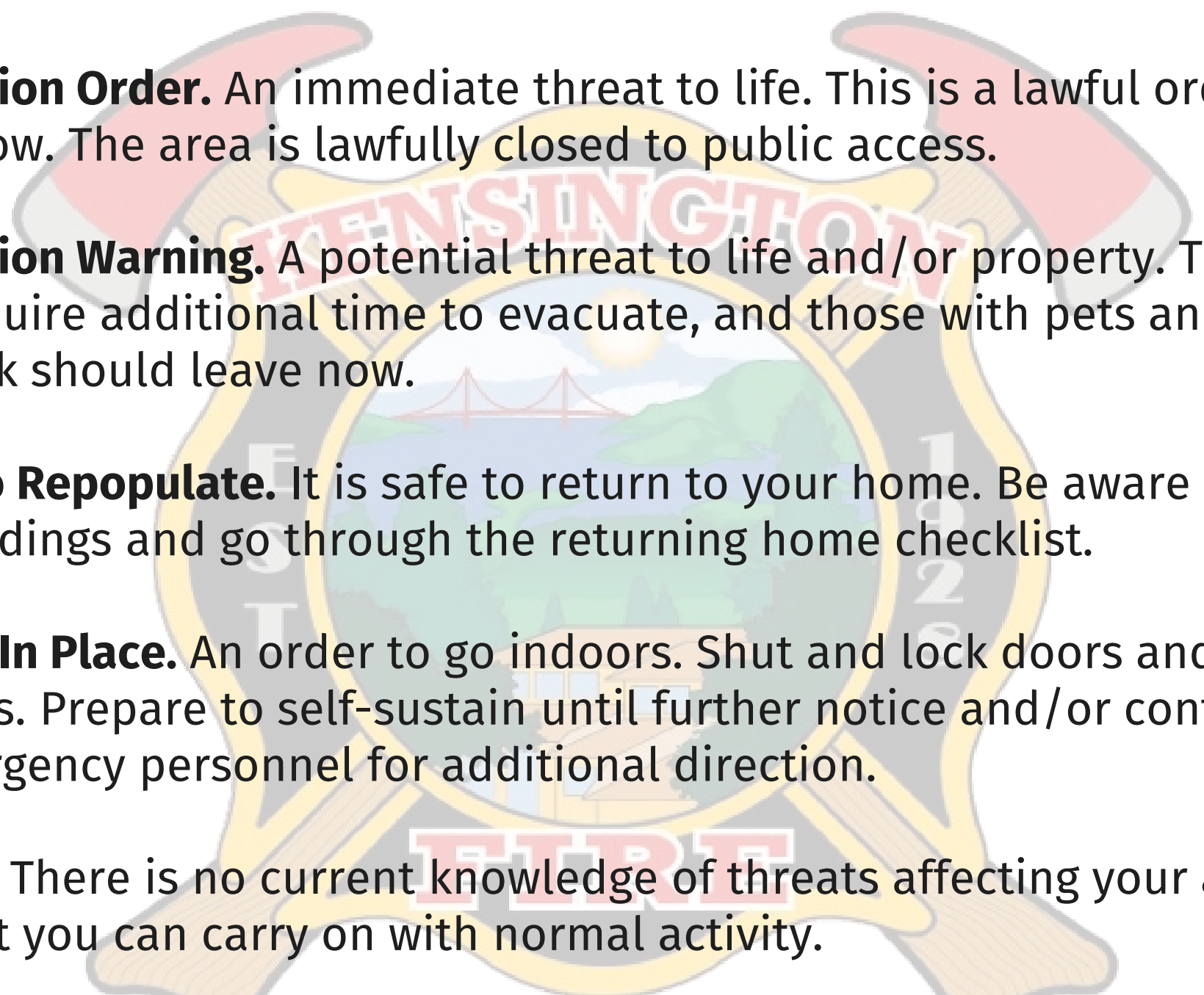




**KENSINGTON COMMUNITY
EVACUATION DRILL**

The logo of the Kensington Fire Department is a Maltese cross. The top arm contains the word "KENSINGTON" in red, outlined letters. The bottom arm contains the word "FIRE" in red, outlined letters. The center of the cross features a circular emblem with a landscape scene including a house, trees, and a sun. The cross is outlined in yellow and has a grey background.

In the event of a wildfire or an emergency situation, law enforcement and fire agencies issue evacuation warnings or evacuation orders for impacted areas. These notices are issued for a **Zone** with an evacuation **Status**.



Evacuation Order. An immediate threat to life. This is a lawful order to leave now. The area is lawfully closed to public access.

Evacuation Warning. A potential threat to life and/or property. Those who require additional time to evacuate, and those with pets and livestock should leave now.

Clear To Repopulate. It is safe to return to your home. Be aware of your surroundings and go through the returning home checklist.

Shelter In Place. An order to go indoors. Shut and lock doors and windows. Prepare to self-sustain until further notice and/or contacted by emergency personnel for additional direction.

Normal. There is no current knowledge of threats affecting your area and that you can carry on with normal activity.



April 9, 2022 @ 9:00 AM

**Wildfire in Tilden Park
East Bay Regional Parks**

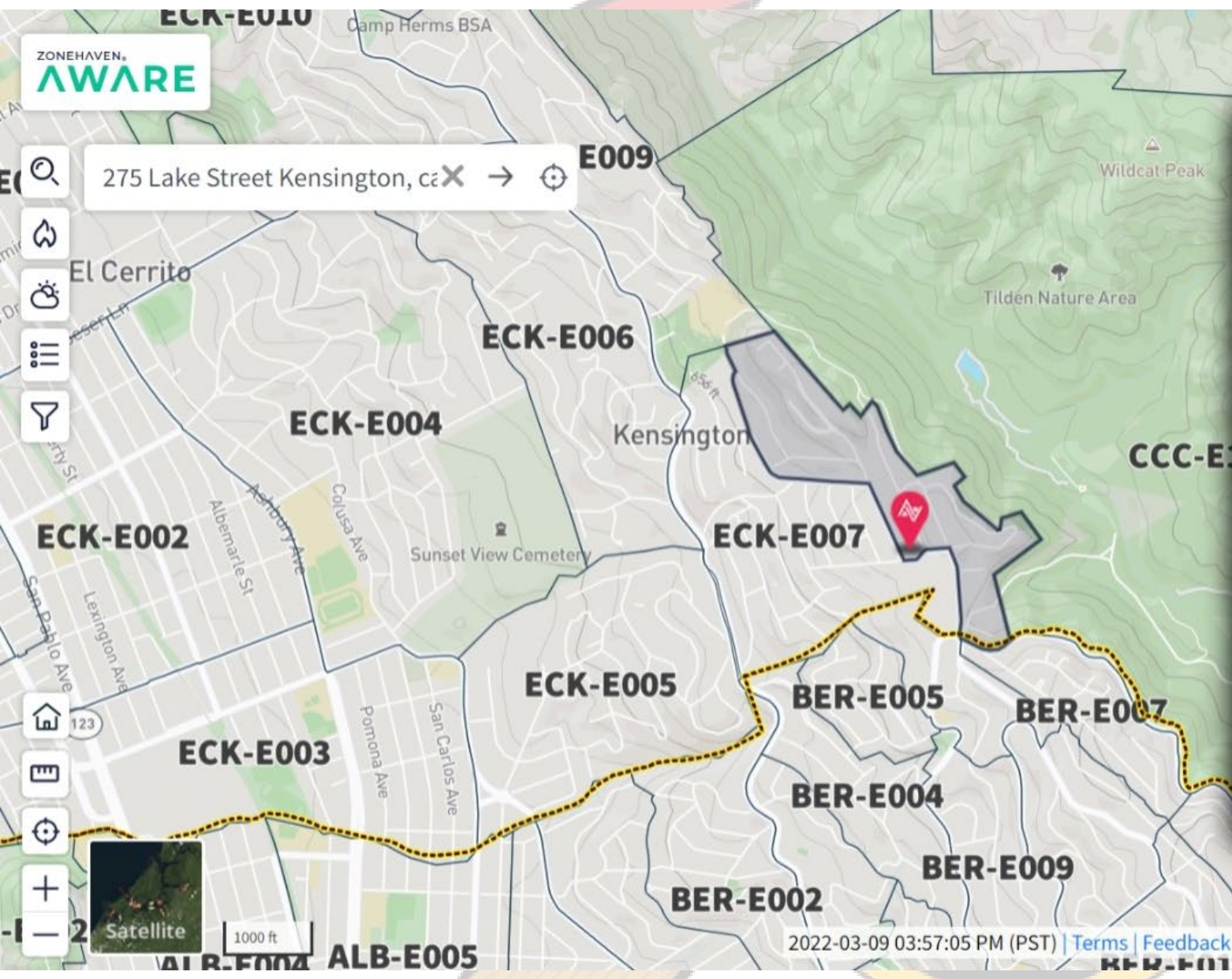
Goals:

- **Public Education**
- **Test of the County Community Warning System**
- **Evaluation of traffic flow on critical streets**
- **Self realization of residents “Readiness & Resiliency”**
- **Learn “Know My Zone” www.myzonehaven.com**



275 Lake Street Kensington, CA →

- 🔍
- 🏠
- 🌤️
- ☰
- 📢



ZONE	ECK-E008
STATUS	Normal No current knowledge of active public safety incidents affecting your area.
REASON	-
SUMMARY	Kensington - (Southeast) East Bay Hills Ridgeline - Adjacent Tilden Park
DESCRIPTION	North of Wildcat Canyon Rd East of Kenyon Ave and Purdue Ave South of Kensington Elementary School West of Tilden Park
USEFUL LINKS	Sign up - Community Warning System alerts See All(4)
EVACUATION INFO	
Temporary Evacuation Points -	
FIRE AND POLICE INFO	
Last changed on Wed Feb 23 2022 09:49 AM. Current as of Wed Mar 09 2022 03:56 PM	



Zone ECK E0008 will be the actual evacuation zone

- **Voluntary participation to physically evacuate**
- **Safety**

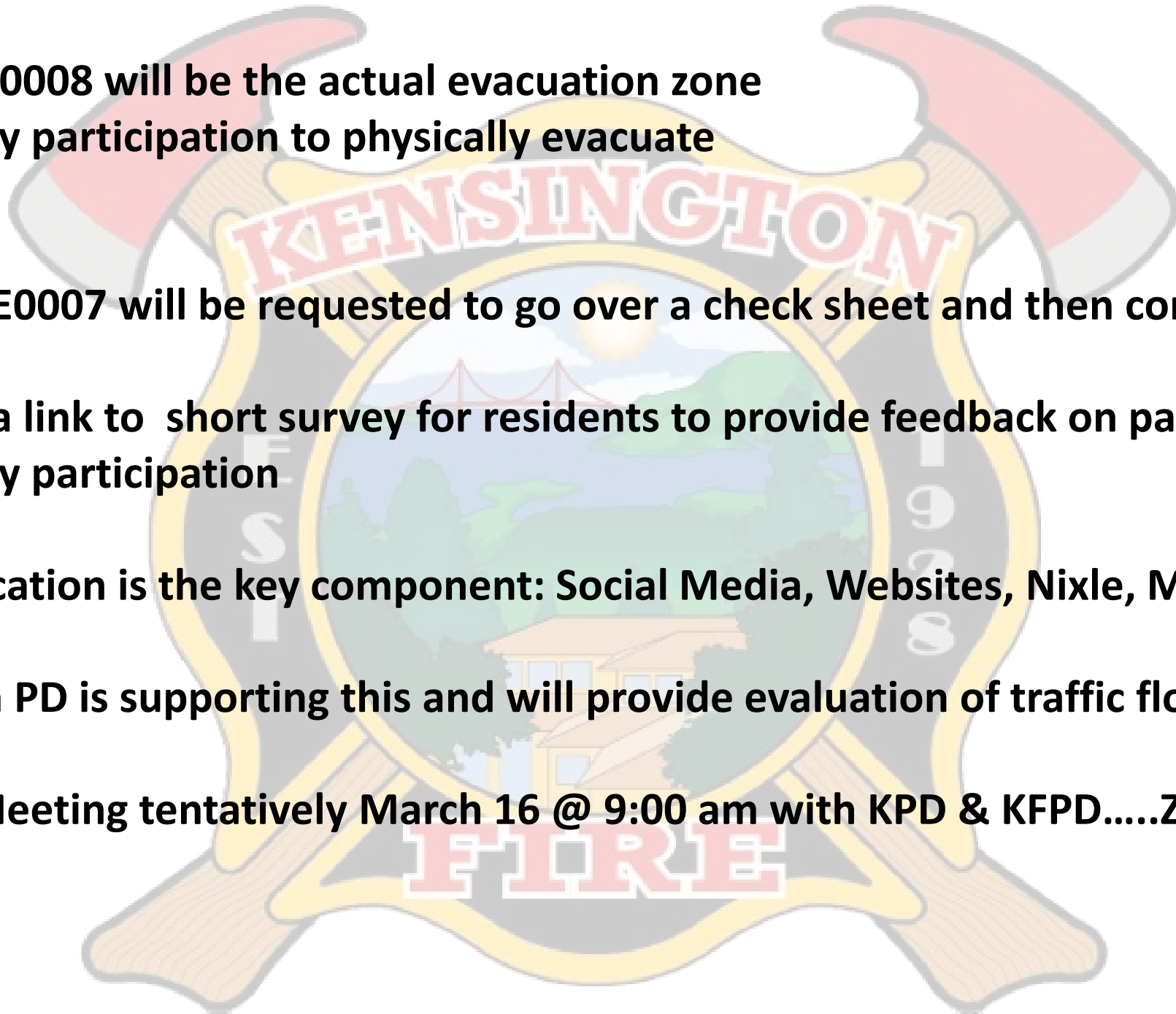
Zone ECK-E0007 will be requested to go over a check sheet and then complete the survey

- **Provide a link to short survey for residents to provide feedback on participation**
- **Voluntary participation**

Public Education is the key component: Social Media, Websites, Nixle, Mailer...?

Kensington PD is supporting this and will provide evaluation of traffic flow.

Planning Meeting tentatively March 16 @ 9:00 am with KPD & KFPD.....ZOOM



Tasks for Planning Meeting

- Fire Department will handle coordination with County CWS
- KPD to coordinate with Sunset View Cemetery to open gate and use alternative route
- Emergency preparedness coordinator to coordinate public education
- Fire to arrange for hill coverage during drill
- KPD to coordinate with BART PD for use of parking lot
- Emergency preparedness coordinator to coordinate with PD to utilize volunteers for traffic evaluation
- KPD to coordinate with Berkeley and EL Cerrito PD



Contra Costa County
Office of the Sheriff
Community Warning System



everbridge

NIXLE[®]

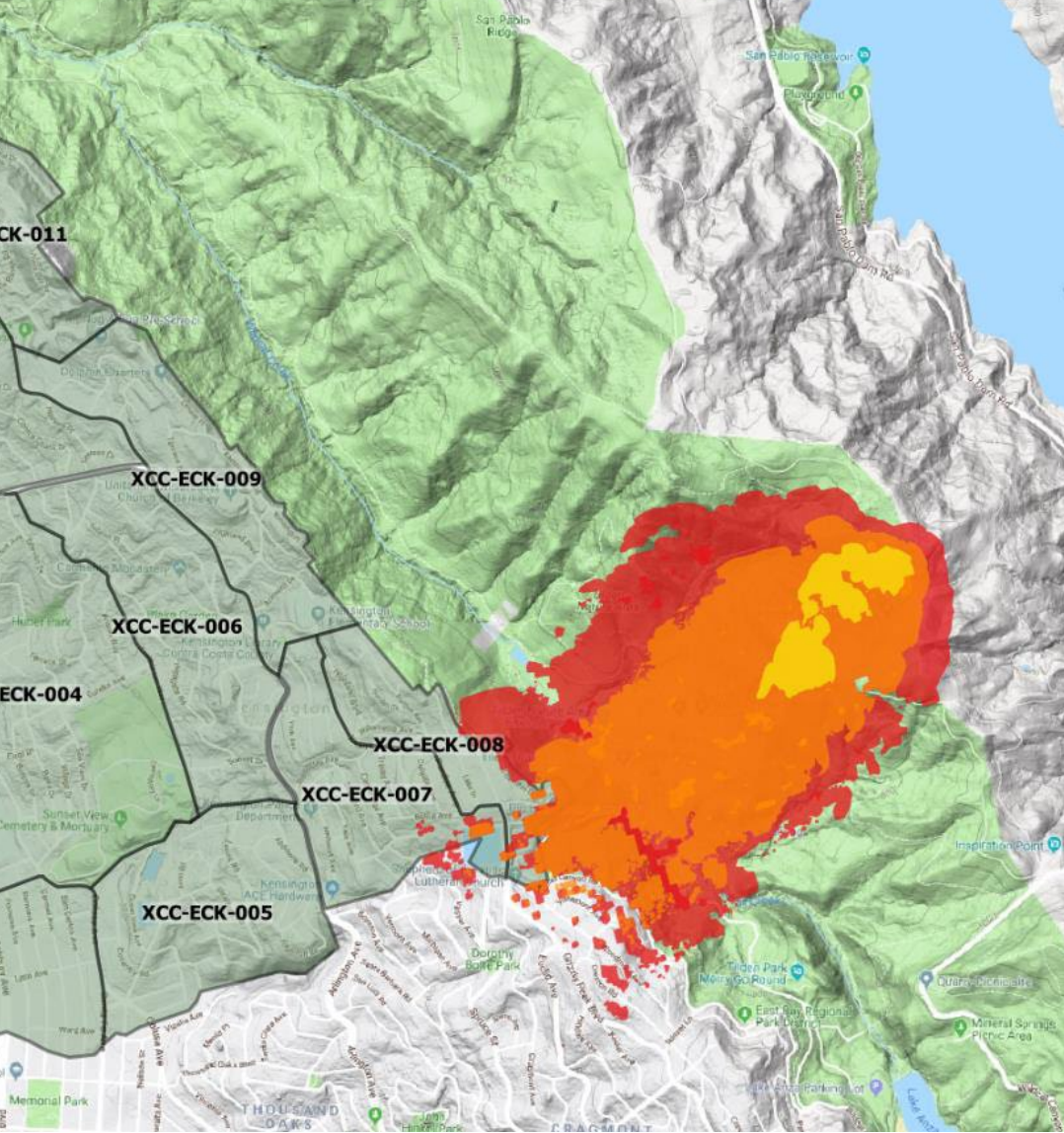
FIRE



Nextdoor

Key Intersections

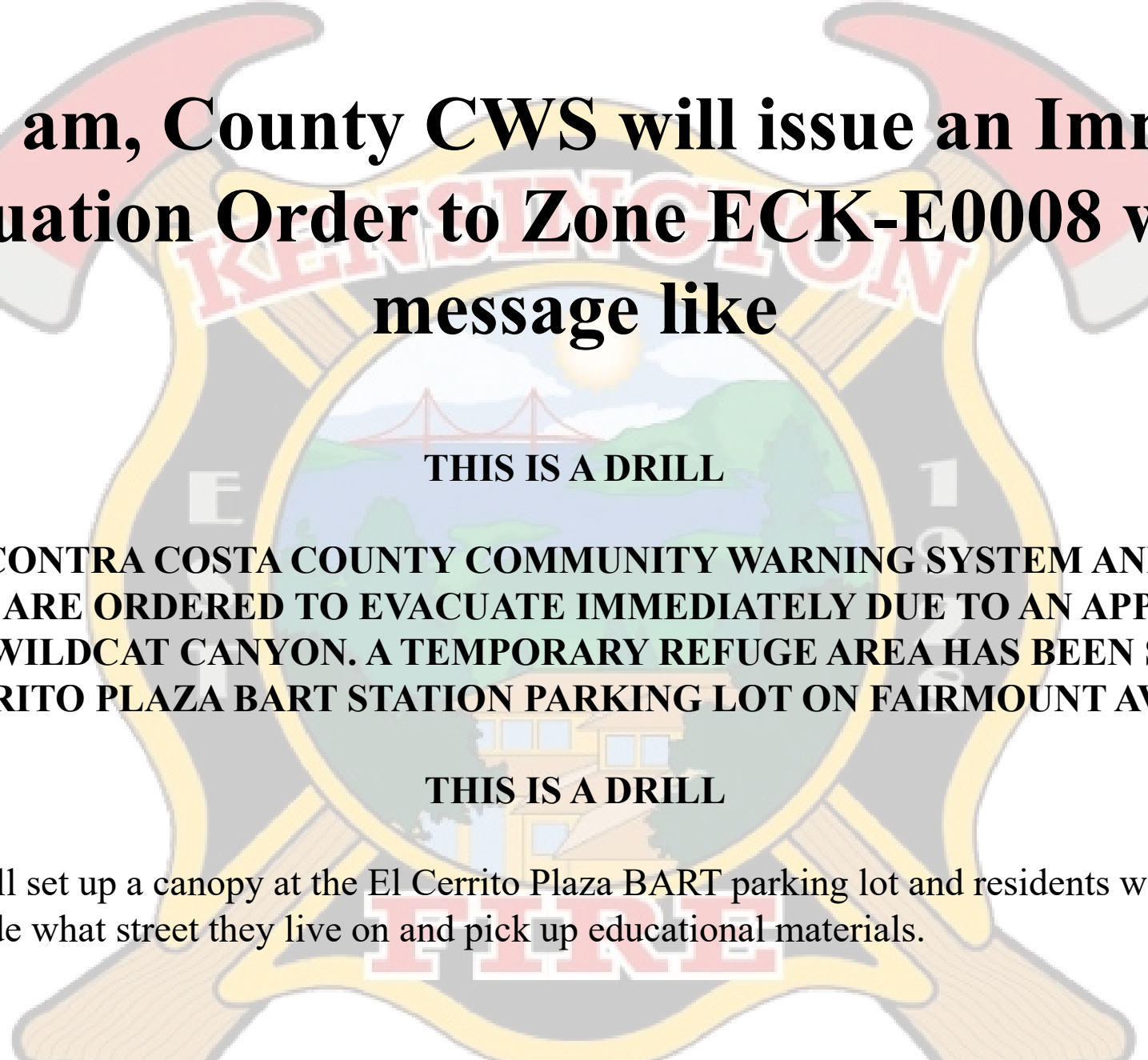
- Beloit @ Cambridge
- Cambridge @ Yale
- Yale @ Princeton
- Princeton @ Amherst
- Amherst @ Arlington (North or South)
- Kenyon @ Wellesley
- Wellesley / Oberlin @ Arlington
- Kenyon @ Westminster
- Westminster @ Arlington (North or South)
- Sunset @ Sunset View Cemetery



Event Target Area

Wildfire in Tilden Park

- Zonehaven areas
ECK-E0008 & E0007
- South of Kensington
Hilltop School and East
of the Arlington Avenue



At 9:00 am, County CWS will issue an Immediate Evacuation Order to Zone ECK-E0008 with a message like

THIS IS A DRILL

THIS IS THE CONTRA COSTA COUNTY COMMUNITY WARNING SYSTEM AND ALL ZONE 8 RESIDENTS ARE ORDERED TO EVACUATE IMMEDIATELY DUE TO AN APPROACHING WILDFIRE IN WILDCAT CANYON. A TEMPORARY REFUGE AREA HAS BEEN SET UP AT THE EL CERRITO PLAZA BART STATION PARKING LOT ON FAIRMOUNT AVENUE.

THIS IS A DRILL

The District/PD will set up a canopy at the El Cerrito Plaza BART parking lot and residents would be asked to drive by and provide what street they live on and pick up educational materials.



Fifteen minutes later County CWS would issue an alert to Zone 7 residents with the following message:

THIS IS A DRILL

THIS IS THE CONTRA COSTA COUNTY COMMUNITY WARNING SYSTEM AND ALL ZONE 7 RESIDENTS ARE ORDERED TO EVACUATE IMMEDIATELY DUE TO AN APPROACHING WILDFIRE IN WILDCAT CANYON. RESIDENTS OF ZONE 7 ARE REQUESTED TO REVIEW THEIR EVACUATION CHECK SHEET AND COMPLETE THE SURVEY AT

WWW.KENSINGTONFIRE.ORG/SURVEY

THIS IS A DRILL

FIRE

Timeline

8:00 am Emergency Preparedness Coordinator to facilitate setup of check in point in BART parking lot

8:30 am Open rear gate to cemetery

8:45 am Engine 165 will stage at Los Altos and Grizzle Peak Blvd.

9:00 am County CWS will issue first alert for immediate evacuation to Zone ECK-E0008

9:15 am County CWS will issue second alert for simulated immediate evacuation to Zone ECK-E0007

10:00 am Debrief Location to be determined



QUESTIONS