



Kensington Ember Exclusion Program
Wildfire Defense Mesh Pilot
Application: 4/1/2026 - 5/31/2026



TABLE OF CONTENTS

1 PROGRAM OVERVIEW

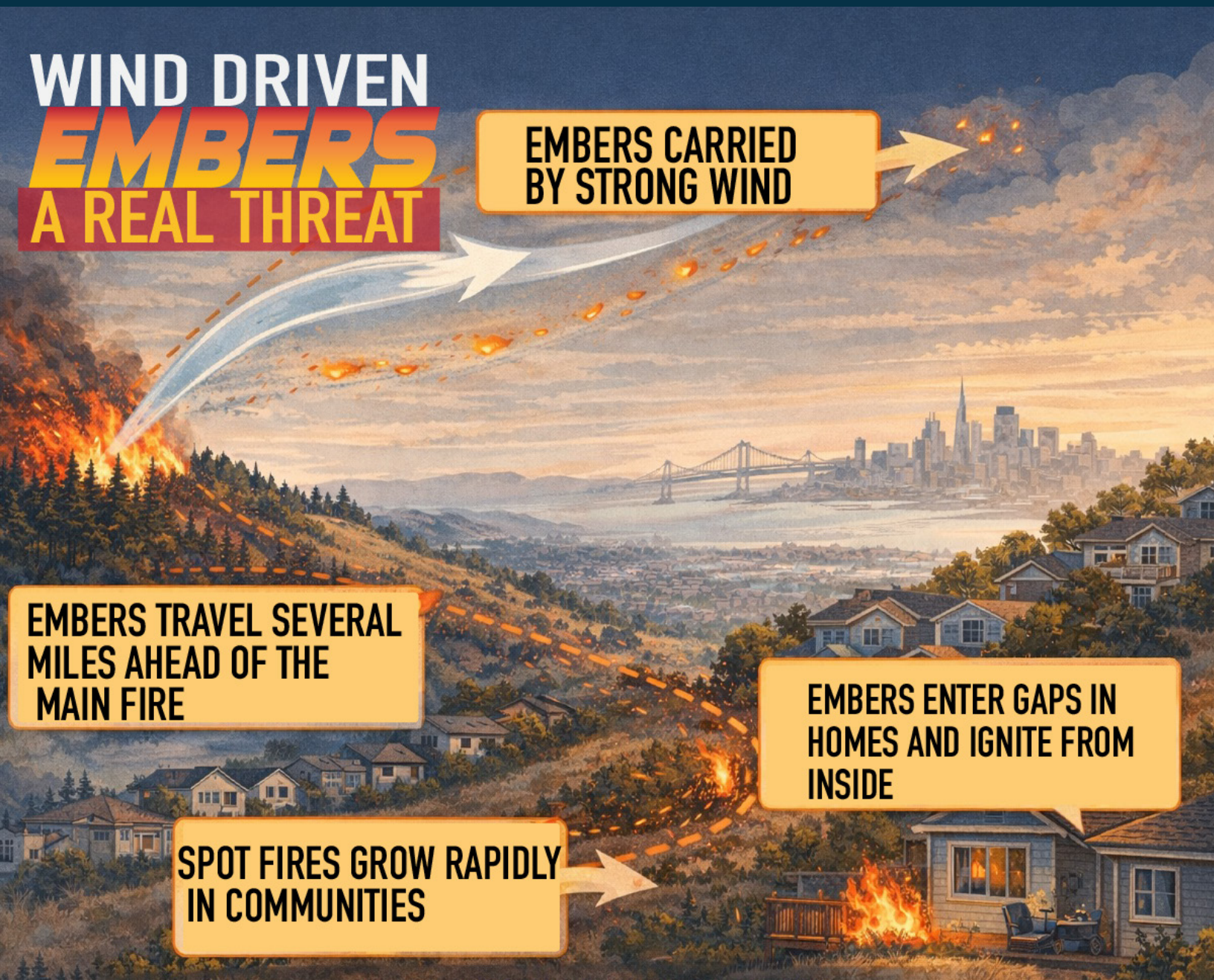
2 BEFORE YOU APPLY

3 APPLICATION PROCESS

4 INSTALLATION REQUIREMENTS

5 TERMS & CONDITIONS

1. PROGRAM OVERVIEW



The Kensington Ember Exclusion Program (KEEP) is a community-driven wildfire risk reduction initiative designed to help residents harden their homes against ember intrusion—the leading cause of home ignition during wildfires.

KEEP provides ember-resistant vent mesh materials and guidance to support residents in completing retrofit projects that reduce vulnerabilities in soffits, attic vents, and foundation openings.

This guide is designed to ensure applicants fully understand project scope, cost, and labor requirements before applying, setting each project up for success.

2. BEFORE YOU APPLY: PROJECT PLANNING

Applicants are expected to evaluate their project in advance. This includes:

1. Determine Installation Method

Decide whether you will:

- Install the mesh yourself, or
- Hire a contractor

A community-generated labor resource list is available here:

www.kensingtonfirewise.org/resource-list

IMPORTANT: KEEP provides mesh materials through Wildfire Defense Mesh, not full project funding. Labor and other costs associated to the project are the responsibility of the property owner.

2. Measure All Applicable Openings

Measure all:

- Soffit vents
- Attic vents
- Foundation vents

Measure from the inside of the opening.

Questions? Contact the Program Coordinator: prepare@kensingtonfire.org

TIP:

Accurate measurements are critical to ensure correct material allocation.

Improper measurement or installation shall not constitute grounds for additional mesh distribution.

3. Understand Your Project Scope & Cost

Before applying, confirm the total number of vents/openings, estimated labor cost if using a contractor.

3. APPLICATION & PROJECT PROCESS

STEP 1: Register as an Applicant

Register online: www.kensingtonfire.org/keep

Include:

- Property information
- Vent color preference
- Program Terms & Conditions Acknowledgment

STEP 2: Measure and Submit Measurements

- After applying, the Program Coordinator will send an email to applicants with access
- to the Wildfire Defenders Portal. Upon submitting measurements, the Program Coordinator
- will schedule a site visit with you to confirm project details.

STEP 3: Site Visit and Application Review

- Application details will be validated and reviewed by KCSD.

Award Notifications will be emailed on June 12, 2026

STEP 4: Material Distribution

- Approved participants will be notified when their ember-resistant mesh materials are anticipated to arrive. Information on coordinating material pick-up will be provided.

STEP 5: Installation Completion

- Residents complete installation by self-installation or contractor installation.
- Ensure the mesh frame is sealed around the edges with a fire-resistant caulk.

STEP 6: Project Verification

- Upon completion, notify the Program Coordinator (prepare@kensingtonfire.org)
- Once project completion is verified, an Acknowledgment Letter will be provided which can be submitted to an insurance provider as documentation of wildfire mitigation efforts.

4. INSTALLATION REQUIREMENTS

All installations must:

- Follow manufacturer specifications
- Fully cover all vent openings
- Be securely fastened
- Include fire-resistant caulking to seal edges and gaps

Improper installation will reduce effectiveness and increase ember intrusion risk.

FAQs FOR YOUR CONSIDERATION

Should the mesh be 1/8" or 1/16"?

The 1/16" excludes more embers but might reduce ventilation air flow below functional level without adding ventilation area. Also, it needs more maintenance because it can become clogged with detritus.

The 1/8" choice reduces those problems but does let certain embers in. That choice can be supported by the facts that the embers that do enter through 1/8" are very small and do not burn long and do not fly far into the vented area. If the area near the vent is kept free of flammable material some experts are comfortable with using 1/8".

Should the mesh be placed over existing larger gauge mesh?

It depends on whether it will reduce ventilation to an unacceptable level. It is recommended that the existing mesh is removed and new mesh installed.

Should the mesh be installed on the inside, leaving the existing mesh or (nonflammable) louver in place?

Yes, if any space where embers can accumulate is nonflammable so a wood frame might need to be covered with metal.

Is galvanized mesh an available option?

KCSD is offering stainless steel mesh because a program is available which makes our offer feasible. However, galvanized mesh would function well for decades.

Are there other types of vents available?

Another very different type of protection is the Vulcan vents which are mesh with intumescent material that expands when it is exposed to heat. These are much more expensive but should completely prevent embers from entering. Of course, if they are exposed to high heat, they need to be replaced. KCSD is not able to offer these vents.

Do I need to treat all vents and soffits when preparing my home for wildfire protection?

Yes. It's important to locate and treat all vents around your home. If soffits are installed to cover open eave areas, they must include proper ventilation—especially if existing vents are enclosed by the soffits. Soffits play a critical role in preventing wind-driven embers from accumulating at the junction where the eave meets the building, helping reduce the risk of ignition.

5. TERMS & CONDITIONS

KENSINGTON EMBER EXCLUSION PROGRAM

TERMS & CONDITIONS

The Kensington Ember Exclusion Program (“KEEP”) is administered by the Kensington Community Services District (“KCS D” or “District”) to reduce wildfire risk by distributing ember-resistant mesh materials to eligible properties within Kensington. Participation in this program is subject to the following terms and conditions.

1. Program Purpose and Scope

KEEP provides ember-resistant metal mesh materials intended solely to reduce the risk of embers entering ventilation openings. The program provides materials only and does not include labor, installation, repairs, inspections, design assistance, or cost reimbursement.

2. Eligibility Requirements

The subject property must be located within the jurisdictional boundaries of KCS D. 2. The applicant must be the property owner or an authorized representative of the property owner. 3. Materials are limited to existing primary residential structures and ADUs. 4. Participation is limited to one application per parcel, unless otherwise approved by the District. 5. Ineligible Participants:

The following individuals are not eligible to participate in KEEP, either directly or indirectly: Members of the KCS D Board of Directors Members of the KCS D Emergency Preparedness Committee Immediate household members of the above, where participation would result in a direct or indirect benefit or conflict.

3. Nature of Assistance – Materials Only

1.KEEP provides mesh materials only. 2. KCS D does not provide labor, installation, retrofits, repairs, measurements, inspections, or code compliance verification. 3. All labor, installation, permits, repairs, additional materials required to complete the installation, and associated costs are the sole responsibility of the property owner.

4. Measurement and Installation

Responsibility Applicants are solely responsible for: Accurate measurements Proper selection of quantities and specifications 2. KCS D relies exclusively on applicant-submitted information and: Assumes no responsibility for incorrect measurements Improper measurement or installation shall not constitute grounds for additional distribution.

5. Material Use Restrictions

1. Materials are intended solely for ember exclusion purposes on vents and must be installed only on the approved Kensington parcel 2. Materials may not be sold, transferred, exchanged, or returned for monetary value. 3. KCSD will request verification of installation.

6. Per-Parcel Limits

1. Mesh distribution per parcel shall not exceed the amount reasonably necessary to cover the existing ventilation openings on the property. 2. KCSD may cap material distribution based on square footage, number of openings, or wildfire exposure. 3. Requests exceeding limits may be reduced or denied, ensuring equitable distribution.

7. Funding Availability and Prioritization

1. Applying for this program does not guarantee a material award. 2. Distribution is subject to district-approved budget limits, inventory, and administrative capacity. 3. KCSD reserves the right to prioritize applications that provide the greatest community-wide wildfire risk-reduction benefit, based on factors including, but not limited to, Fire Hazard Severity Zone designation, defensible space conditions, and completion of Zone Zero mitigation measures by the property owner.

8. No Warranty; Limitation of Liability

1. KCSD takes no responsibility for the condition of materials. 2. KCSD makes no representation regarding performance, code compliance, or insurance eligibility. 3. KCSD shall not be liable for property damage, personal injury, or wildfire loss.

9. Indemnification and Hold Harmless

To the fullest extent permitted by law, the applicant agrees to defend, indemnify, and hold harmless KCSD, its directors, officers, employees, agents, committee members, and volunteers from and against all claims, demands, damages, losses, liabilities, costs, or expenses, including attorneys' fees, arising out of or related to participation in KEEP.

10. Program Modification or Termination

KCSD reserves the right to modify, suspend, or terminate KEEP at any time for funding, policy, or operational reasons.

11. Applicant Certification By submitting the following application, the applicant certifies that all information provided is accurate and agrees to be bound by these Terms and Conditions