

REVISIONS TO FIRST FLOOR PSB LAYOUT

The following explains the current plans and possible alternative arrangements to the first and second floor layout of the Public Safety Building.

Exhibit A shows the proposed layout of the first floor excluding the apparatus bay. This area totals approximately 1,500 sq. ft. and includes a 410 sq. ft. meeting room to accommodate 17 people, 380 sq. ft. of administrative space for 3 or more staff and 80 sq. ft. of storage area. The remaining 630 sq. ft. includes hallway, stairwell, elevator and restroom. No drinking fountain or kitchenette is provided.

Exhibit B shows the relocation of the restroom to the west side of the elevator providing a hallway entrance and thus better restroom access for firefighters and visitors. This change also expands the meeting room area. Also included is a kitchenette for water and snack items. These changes will require modifications to existing plumbing and some ceiling lighting.

Exhibit C shows an alternative plan for the first floor that would convert approximately 1,015 sq. ft. (outlined in blue) of space for police use in addition to about 185 sq. ft. of shared entry, passageway and restroom space for both firefighters, police officers and guests. This would provide the police with 1,200 sq. ft. of useable first floor space. The corridor, stairwell and elevator (outlined in red) total about 300 sq. ft. and are for firefighter use only.

Exhibit D is a revised plan of the second floor that provides the police with 100 sq. ft. of space at the rear of the PSB with direct access to the parking area. This police space could be used for storage of criminal evidence, and infrequently used data and supplies. Adding this second floor area for police use brings the total available police space to 1,300 sq. ft. Additionally, instead of having a shared conference room on the first floor, the firefighters would use space in the large second floor dayroom for a portable table and chairs when group meetings are needed.

Recommendation

That the PSB project architect, Marjang, provide a redesign of the first floor area for the relocation of the restroom and the inclusion of a kitchenette, as shown on Exhibits B and C. The primary purpose of the redesign will be to better serve downstairs inhabitants regardless of whether the first floor is for fire use only or includes police offices.

EXHIBIT B

REVISED FIRST FLOOR AREA

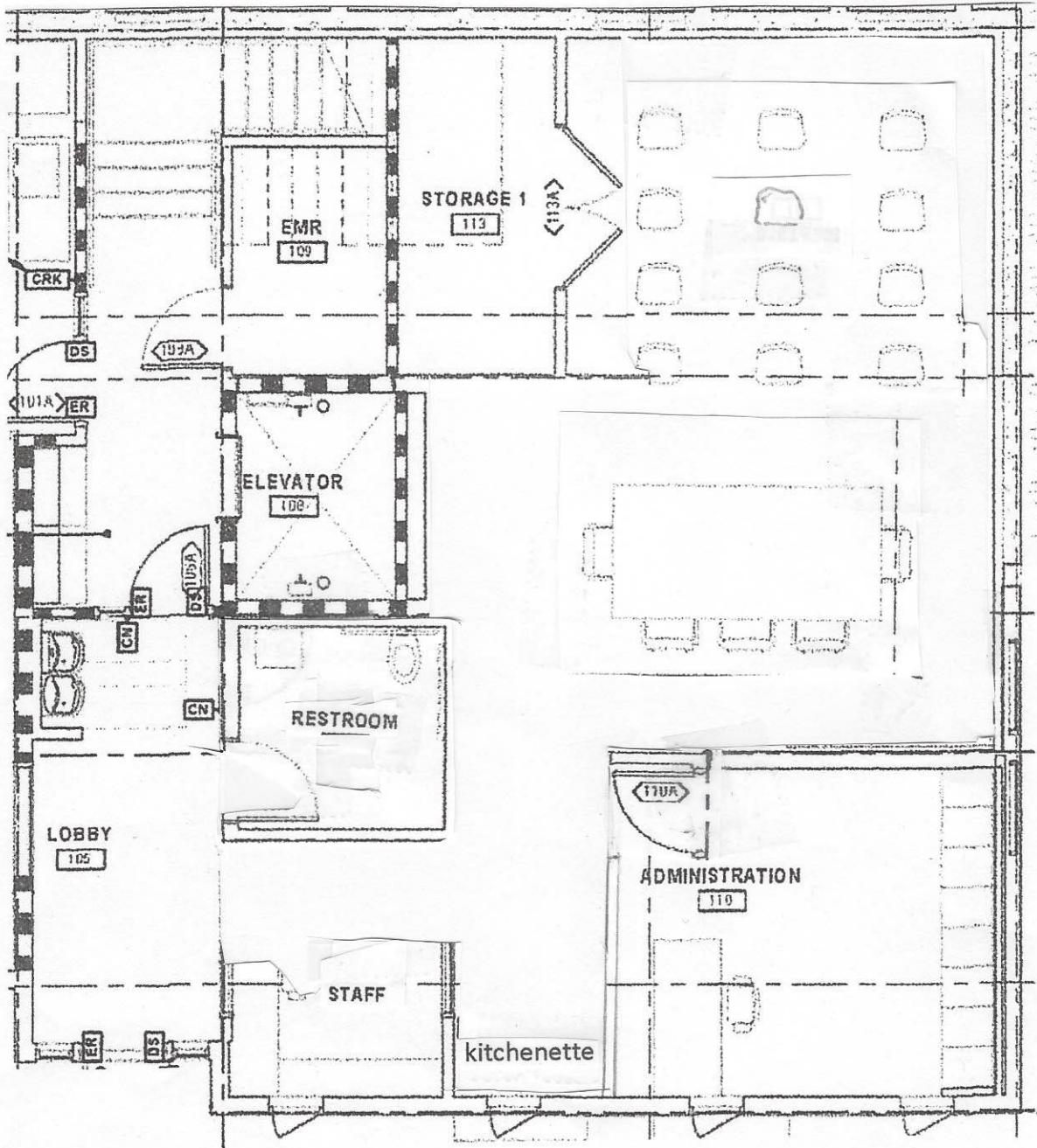


EXHIBIT C

POLICE USE OF FIRST FLOOR AREA

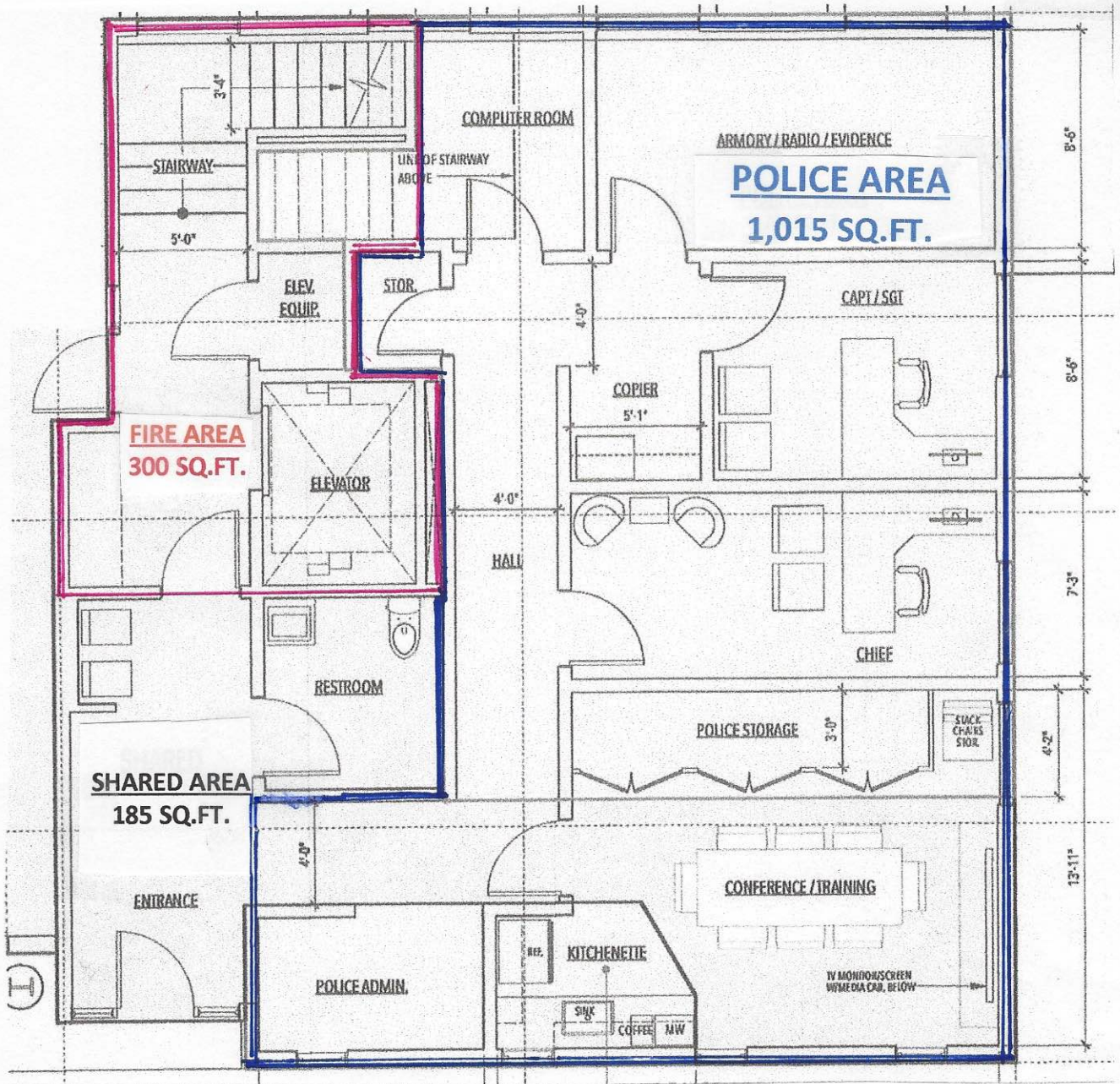


EXHIBIT D

POLICE USE OF SECOND FLOOR AREA

